

KQuIP/UKRR Regional Day

North West

09:30 - 09:50

Introduction from Network Clinical Lead and Co-Chair of KQuIP

- Introducing the Region – Smeeta Sinha, Clinical Lead
- KQuIP – Graham Lipkin, Chair of KQuIP

**‘THINK
KIDNEYS’**

KQuIP

Kidney Quality Improvement Partnership (KQuIP)

UKRR/KQuIP North West Regional Day

Graham Lipkin
Co-chair of KQuIP

•North West Network

•KQuIP/Registry Regional Day

•Aims

- Know your outcomes-data
- Identify your Unit QI leads: Medic and MPT
- Decide on your Unit Key priority
- Feel supported to embed QI in your practice

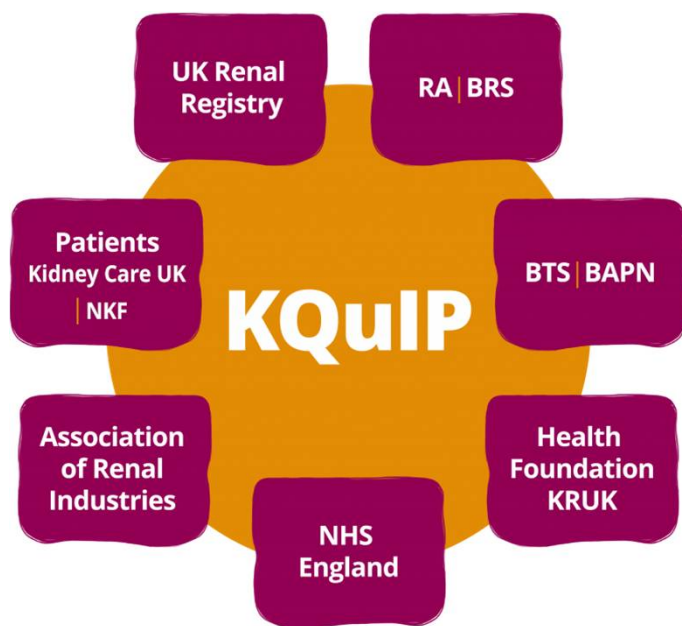
Quality Improvement in Renal Services

- Every Unit is committed to high quality care
- Improvement only happens at Renal Unit Level
- You know best how to improve your services

Design Event: Launch June 2016



Kidney Quality Improvement Partnership (KQuIP)



KQuIP is a dynamic network of kidney health professionals, patients carers and industry ...committed to developing, supporting and sharing quality improvement in kidney services.... in order to enhance outcomes and quality of life for patients with kidney disease.

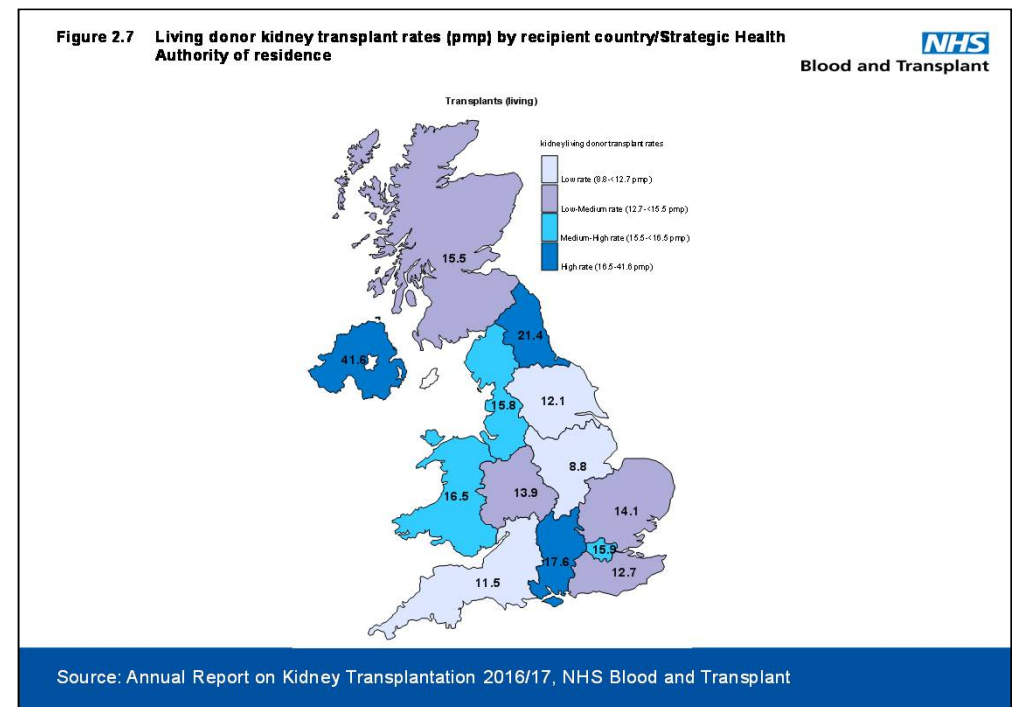
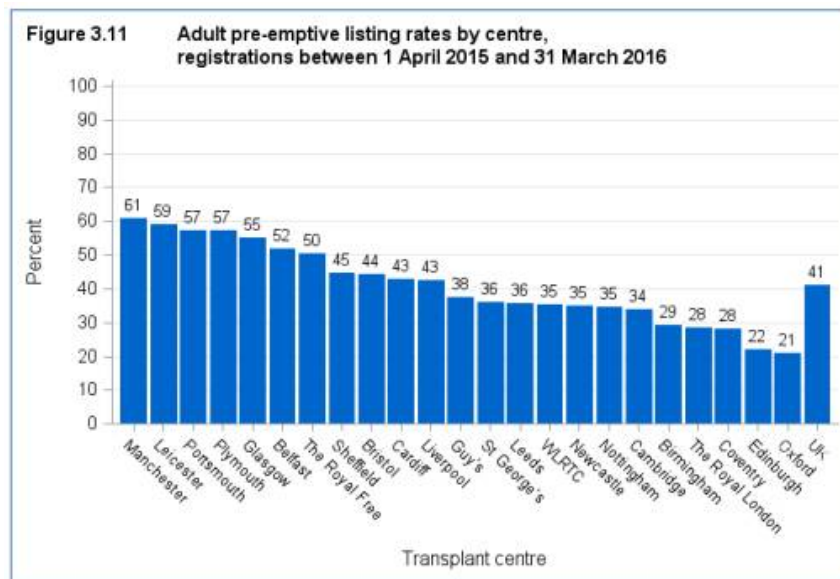
Professional Society Led

Multi-Professional

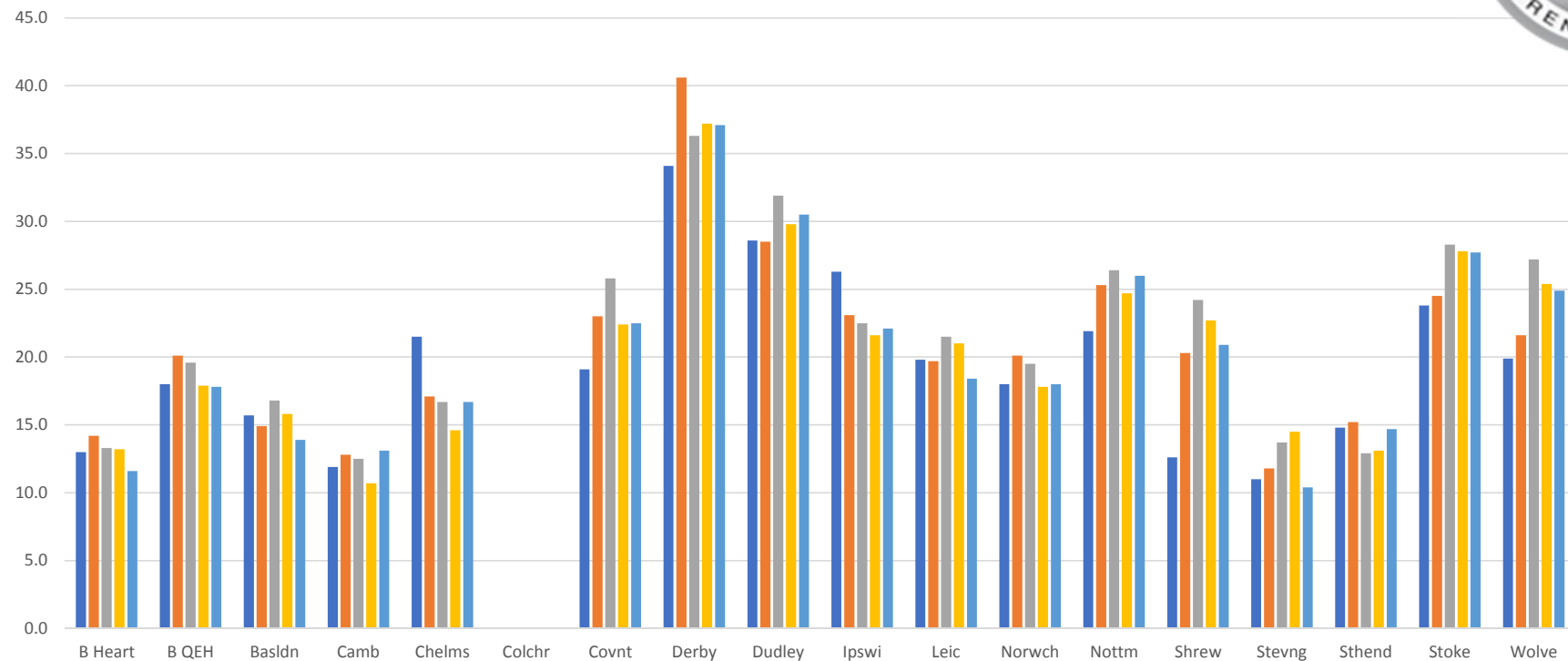
UK

Adults and Children's Care

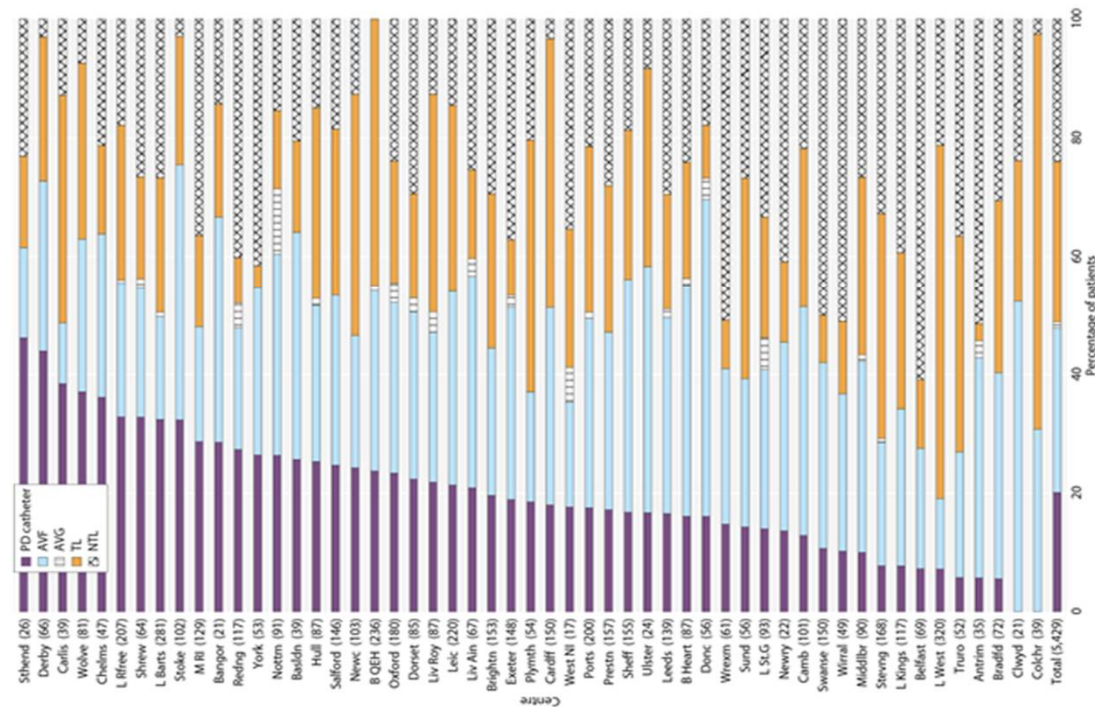
Pre-emptive Transplantation Listing Rates



Home Dialysis: UK Renal Registry-Do we improve?



Access at Initiation of Dialysis



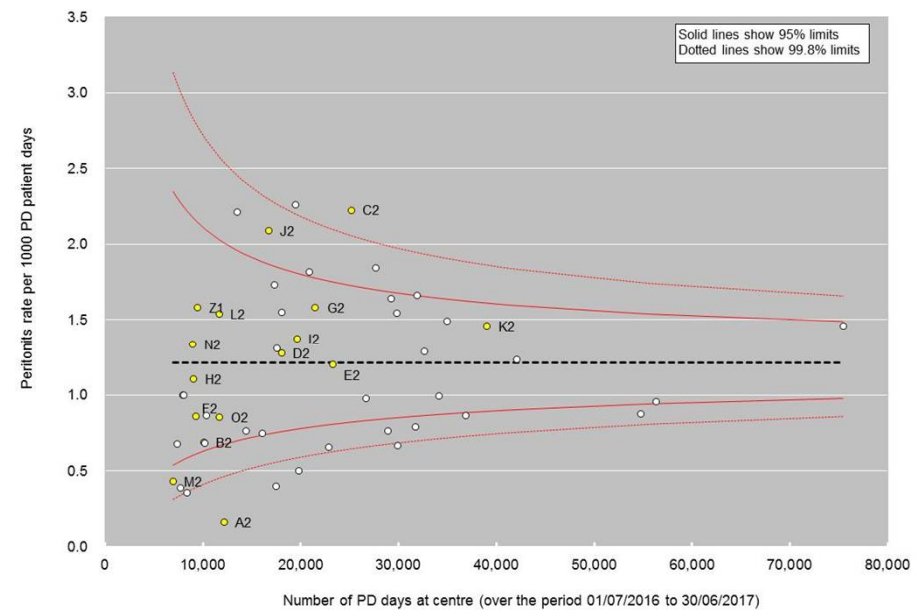
KQuIP
Kidney Quality
Improvement
Partnership

Kidney Quality Improvement Partnership North West Regional
Day- Graham Lipkin

NW UKRR Dashboard data: PD Peritonitis



Centre	Region	Label	Num	Denom	Peritonitis rate per 1000 PD		Outlier?
					patient days	Overall rate	
Bradford	North	Z1	15	9481	1.5821	1.2130	Low 3SD
Carlisle	North	A2	2	12214	0.1637	1.2130	
Doncaster	North	B2	7	10152	0.6895	1.2130	
Hull	North	C2	56	25169	2.2250	1.2130	High 3SD
Leeds	North	D2	23	18039	1.2750	1.2130	
Liverpool Royal	North	E2	28	23287	1.2024	1.2130	
Liverpool_Aintree	North	F2	8	9319	0.8585	1.2130	
Manchester	North	G2	34	21505	1.5810	1.2130	
Middlesbrough	North	H2	10	9059	1.1039	1.2130	
Newcastle	North	I2	27	19664	1.3731	1.2130	High 2SD
Preston	North	J2	35	16744	2.0903	1.2130	
Salford	North	K2	57	39054	1.4595	1.2130	
Sheffield	North	L2	18	11713	1.5368	1.2130	Low 2SD
Sunderland	North	M2	3	6967	0.4306	1.2130	
Wirral	North	N2	12	8998	1.3336	1.2130	
York	North	O2	10	11698	0.8548	1.2130	



Why does unwarranted variation persist?

- **Many reasons:**

- **Specific to each Unit**-solutions can only come from those on the front **line**-
you know your system best
- **Some systematic**
 - Resource?
 - Leadership & leadership training
 - Training in QI methodology
 - Structure
 - We don't share good practice (or learn from less good practice)

KQuIP Progress so far...National Projects

Improving access to kidney transplantation; Transplant First

- Pre-emptive transplant listing and kidney transplantation major unwarranted variation. Transplant First, developed in West Mids. Project managed & packaged by KQuIP. Signed off at KQuIP board and roll out next week.

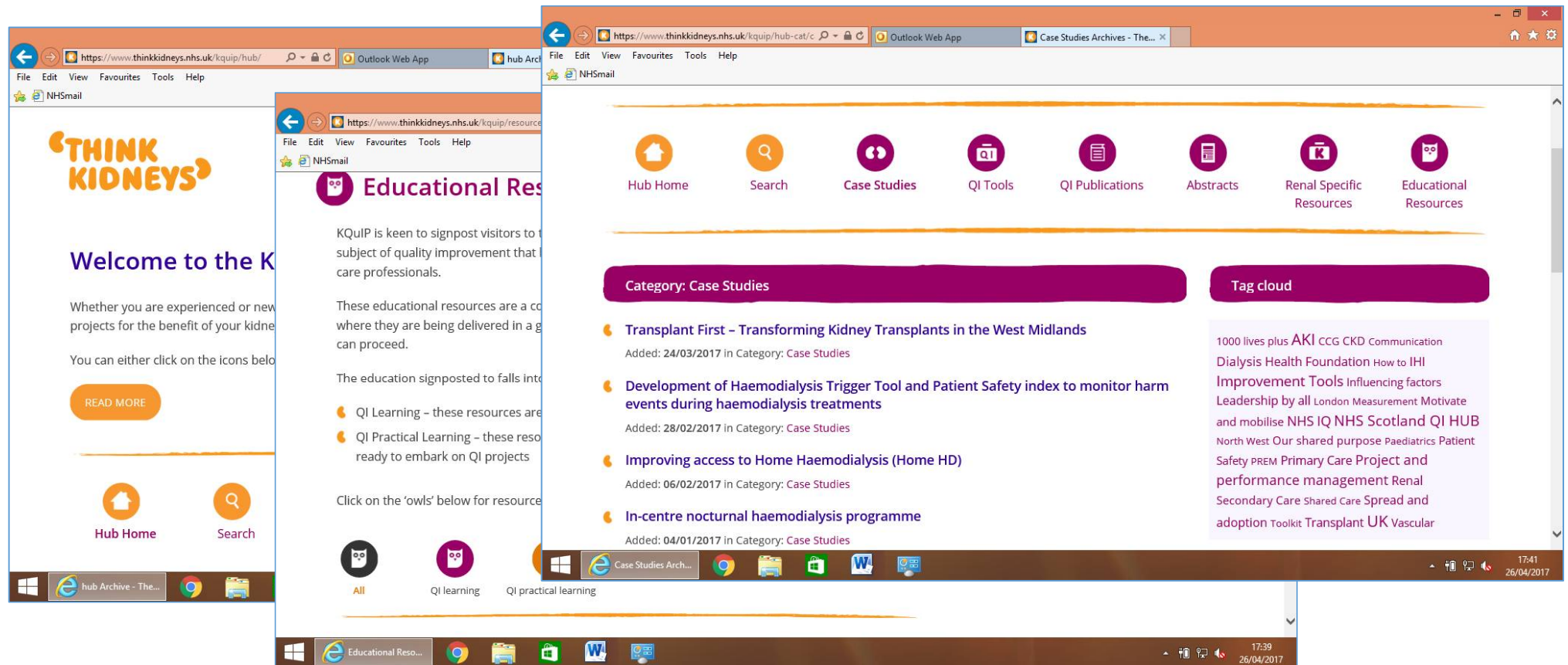
Improving access to home therapies for suitable patients : Home First

- Improve access to peritoneal and home haemodialysis. KQuIP managed national QI project. KQuIP launch Jan 2018.

Improving vascular access; MAGIC - Managing Access by Generating Improvements in Cannulation

- Improve prevalence AVFs & patient experience by reducing complications of cannulation of arteriovenous fistulae and grafts. Launch in April 2018.

KQuIP Hub-Repository*



Why Regions are Key to QI Delivery?

- Right size
 - Healthy competition
 - Peer support and Assist
 - MDT time and travel particularly difficult
- Work together
- Regional focus
 - Renal Association - SIGs
 - GiRFT
 - Rightcare

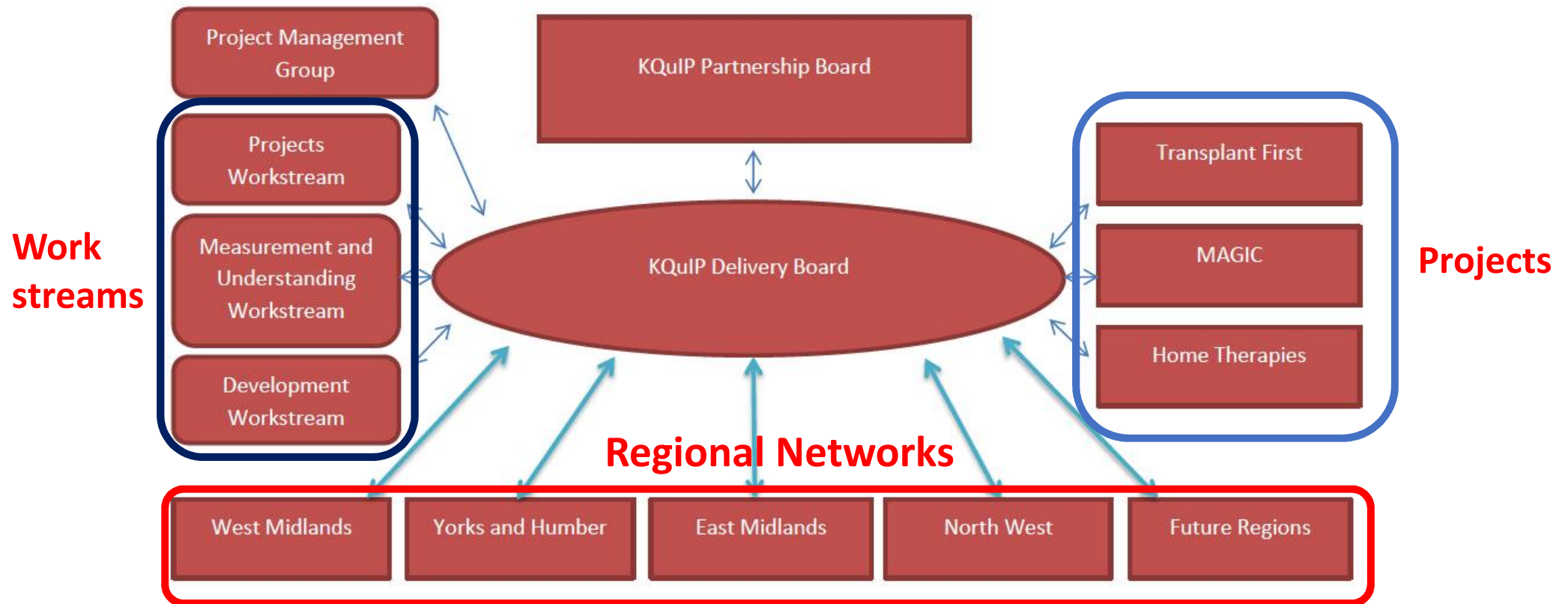
KQuIP Progress so far... Regional Days

KQuIP have supported 4 QI regional days so far.....

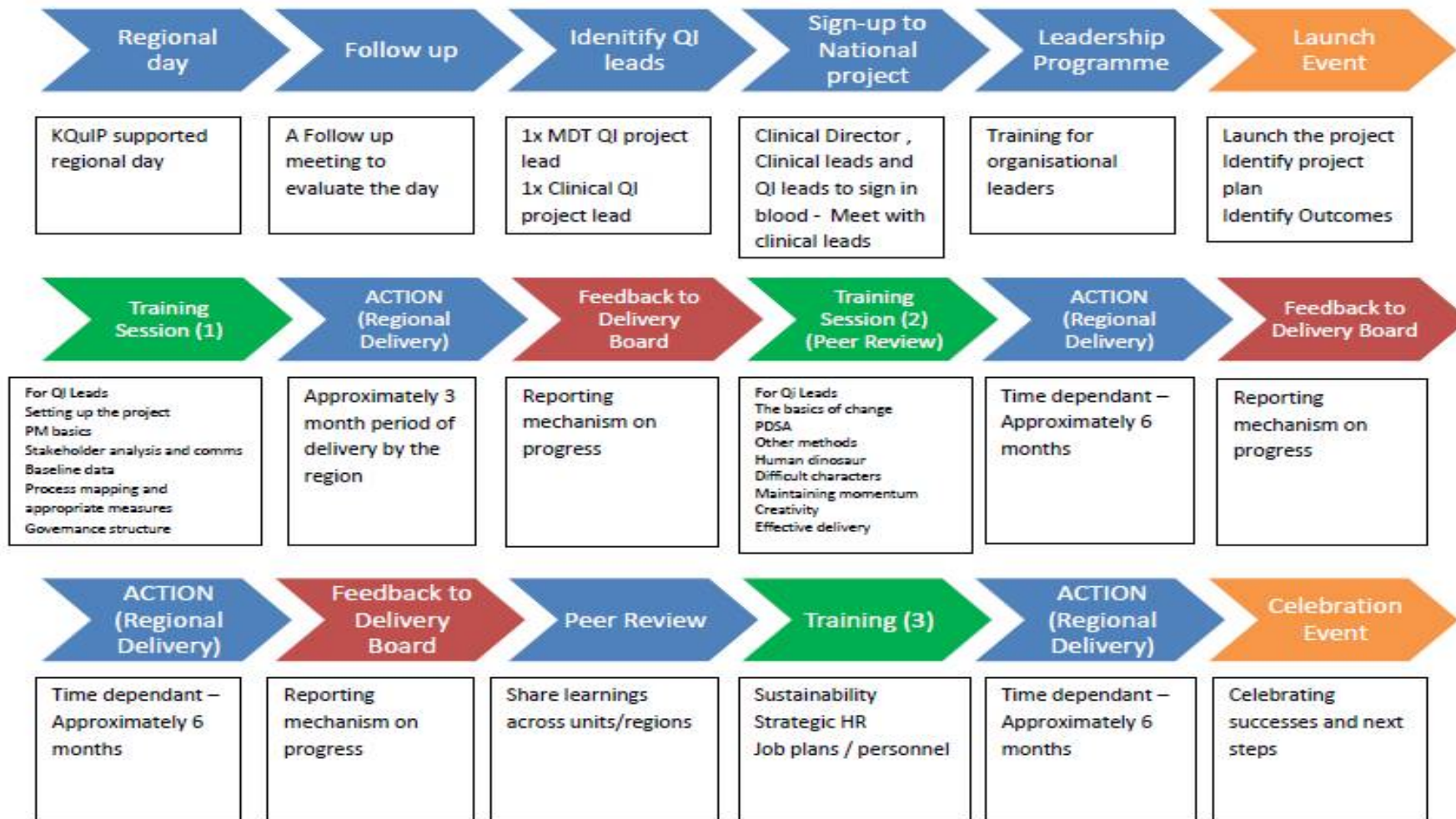
- West Midlands - Built QI infrastructure with identified QI leads. Set up an AKI network. Delivered a Peer Review Day. Identifying next steps.
- Yorkshire and the Humberside - Identifying infrastructure with QI leads. Identifying national project. Identifying next steps for delivery.
- East Midlands - Identifying infrastructure with QI leads. Identifying national project. Identifying next steps for delivery



KQuIP Delivery Structure –Regional Focus



KQuIP Regional Delivery Support Plan



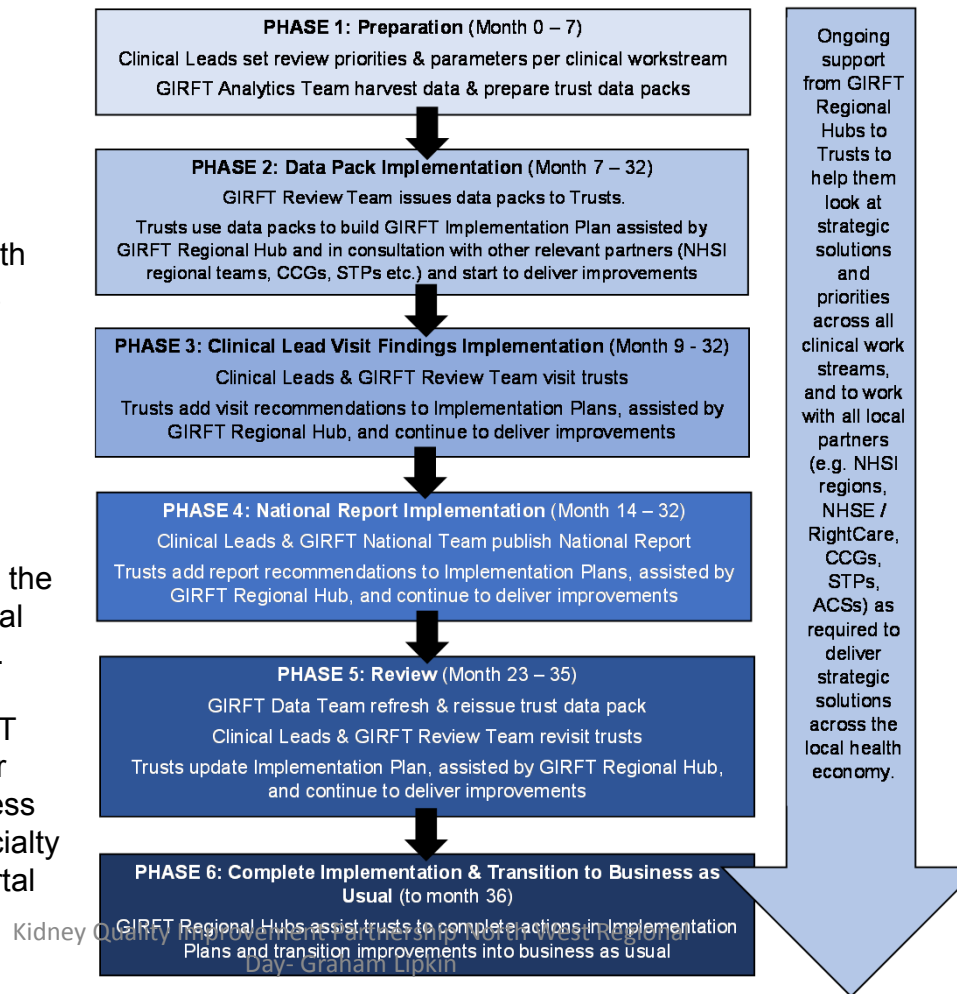
What happens in practice?

This diagram shows how different teams within the GIRFT programme work with trusts and other partners at different times to support implementation.

Clinical Leads set the direction, supported by the Review & Analytics teams.

GIRFT Regional Hubs are the main source of ongoing local support for implementation.

As well as accessing GIRFT metrics and findings in their data packs, trusts can access a range of metrics per specialty via the **Model Hospital** portal at <https://model.nhs.uk/>



GIRFT Regional Support

- 7 GIRFT Regional Hubs operating from Nov 2017.
- **implementation plans** reflecting:
 1. Variations highlighted in Trusts' data packs
 2. Improvement priorities from Clinical Lead visits
 3. Recommendations from each National Report
- GIRFT will also produce **good practice manuals** full of case studies and best practice guidance Hubs will also help to ensure that GIRFT findings and plans are cascaded widely within each trust.



Training in Leadership & QI Methods-Medical and MDT



“In order to practise medicine in the 21st century, a core understanding of quality improvement is as important as our understanding of anatomy, physiology and biochemistry”

Stephen Powis, Medical Director, Royal Free London NHS Foundation Trust, 2015



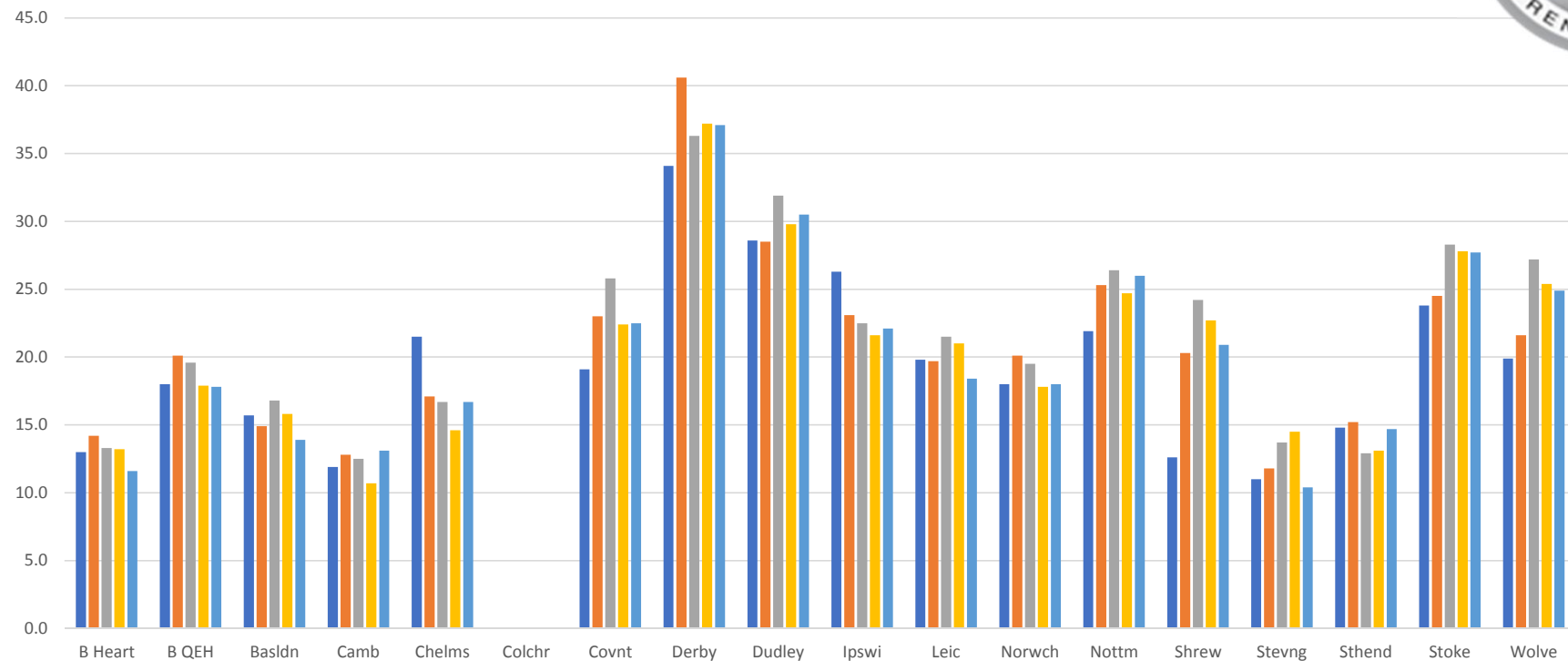
E-Learning and Faculty

‘THINK
KIDNEYS’

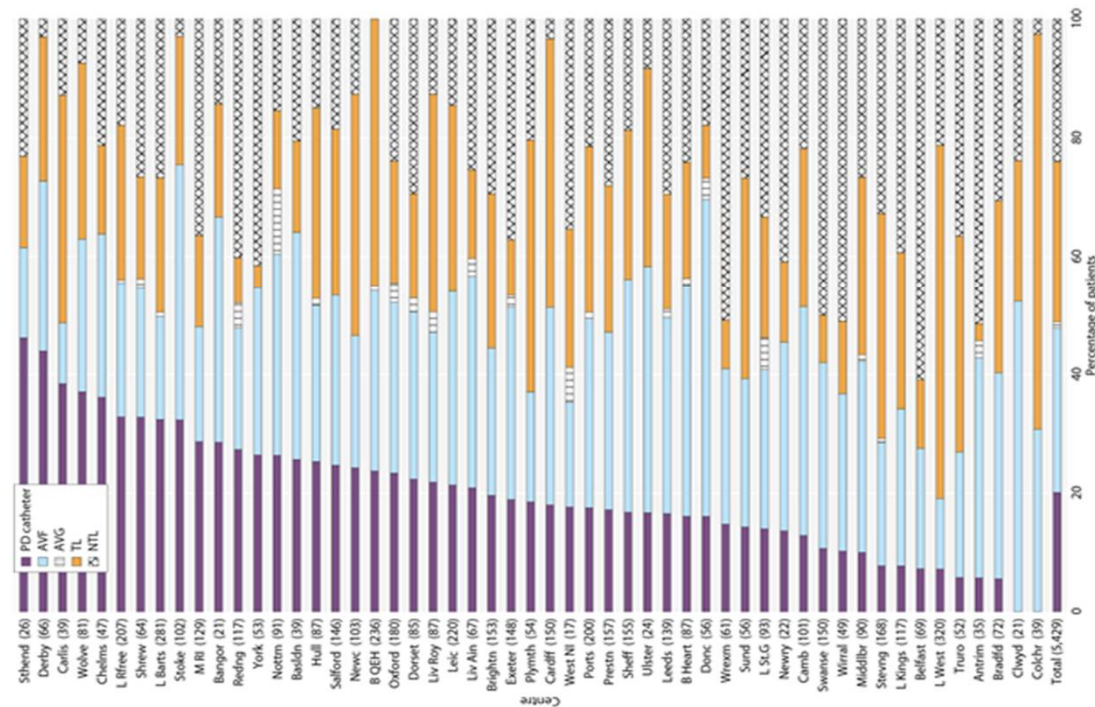
KQuIP
Kidney Quality
Improvement
Partnership

Kidney Quality Improvement Partnership Wmids Regional Day-
Graham Lipkin

Home Dialysis: UK Renal Registry-Do we improve?



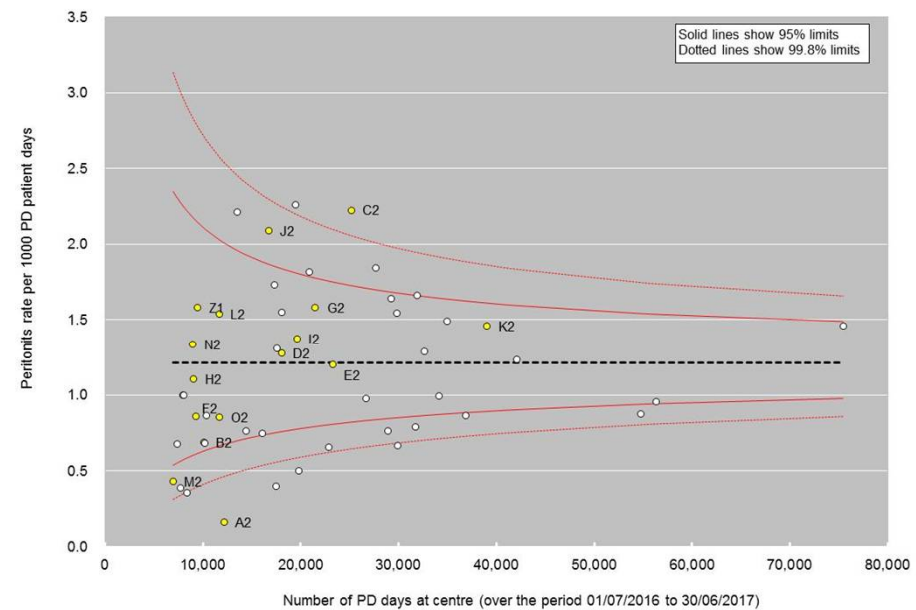
Access at Initiation of Dialysis



NW UKRR Dashboard data: PD Peritonitis



Centre	Region	Label	Num	Denom	Peritonitis rate per 1000 PD		Outlier?
					patient days	Overall rate	
Bradford	North	Z1	15	9481	1.5821	1.2130	Low 3SD
Carlisle	North	A2	2	12214	0.1637	1.2130	
Doncaster	North	B2	7	10152	0.6895	1.2130	
Hull	North	C2	56	25169	2.2250	1.2130	High 3SD
Leeds	North	D2	23	18039	1.2750	1.2130	
Liverpool Royal	North	E2	28	23287	1.2024	1.2130	
Liverpool_Aintree	North	F2	8	9319	0.8585	1.2130	
Manchester	North	G2	34	21505	1.5810	1.2130	
Middlesbrough	North	H2	10	9059	1.1039	1.2130	
Newcastle	North	I2	27	19664	1.3731	1.2130	High 2SD
Preston	North	J2	35	16744	2.0903	1.2130	
Salford	North	K2	57	39054	1.4595	1.2130	
Sheffield	North	L2	18	11713	1.5368	1.2130	Low 2SD
Sunderland	North	M2	3	6967	0.4306	1.2130	
Wirral	North	N2	12	8998	1.3336	1.2130	
York	North	O2	10	11698	0.8548	1.2130	



Why does unwarranted variation persist?

- **Many reasons:**

- **Specific to each Unit**-solutions can only come from those on the front **line**-
you know your system best
- **Some systematic**
 - Resource?
 - Leadership & leadership training
 - Training in QI methodology
 - Structure
 - We don't share good practice (or learn from less good practice)

KQuIP Progress so far...National Projects

Improving access to kidney transplantation; Transplant First

- Pre-emptive transplant listing and kidney transplantation major unwarranted variation. Transplant First, developed in West Mids. Project managed & packaged by KQuIP. Signed off at KQuIP board and roll out next week.

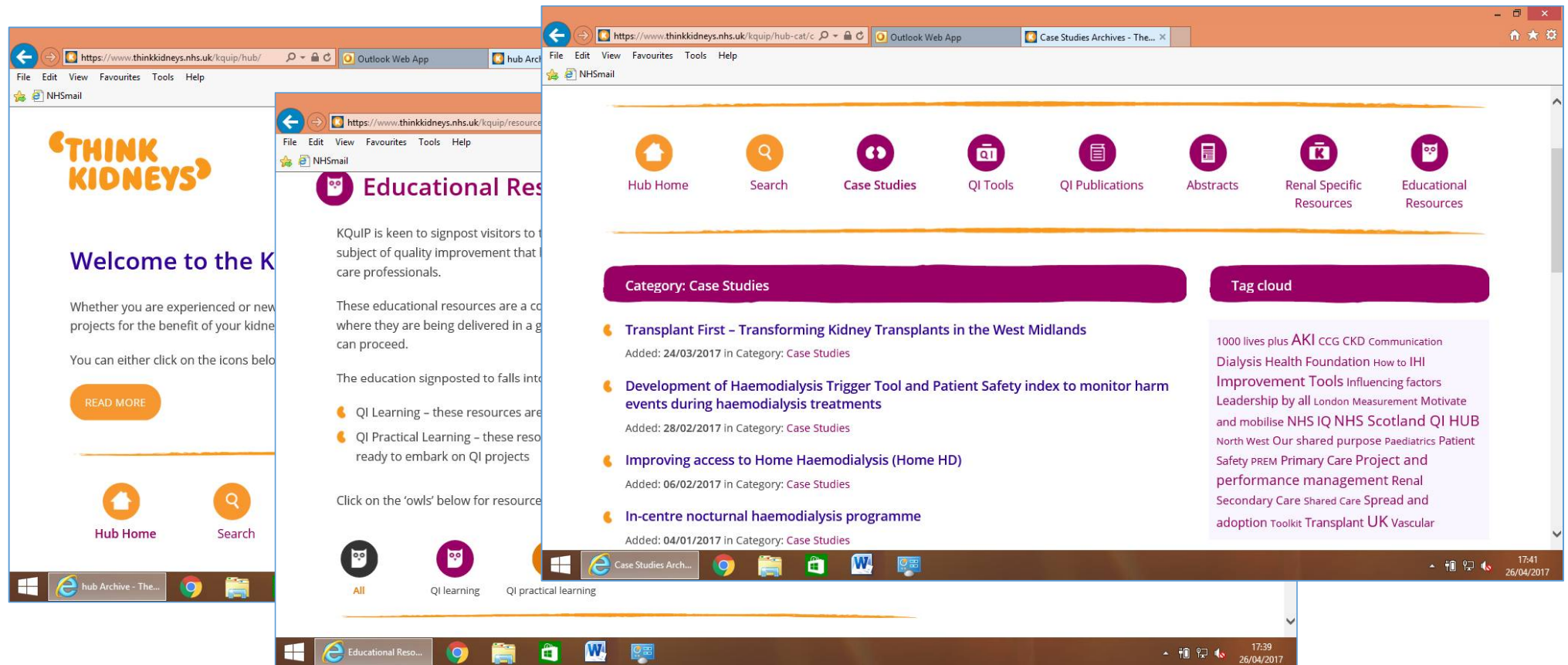
Improving access to home therapies for suitable patients : Home First

- Improve access to peritoneal and home haemodialysis. KQuIP managed national QI project. KQuIP launch Jan 2018.

Improving vascular access; MAGIC - Managing Access by Generating Improvements in Cannulation

- Improve prevalence AVFs & patient experience by reducing complications of cannulation of arteriovenous fistulae and grafts. Launch in April 2018.

KQuIP Hub-Repository*



Why Regions are Key to QI Delivery?

- Right size
 - Healthy competition
 - Peer support and Assist
 - MDT time and travel particularly difficult
- Work together
- Regional focus
 - Renal Association - SIGs
 - GiRFT
 - Rightcare

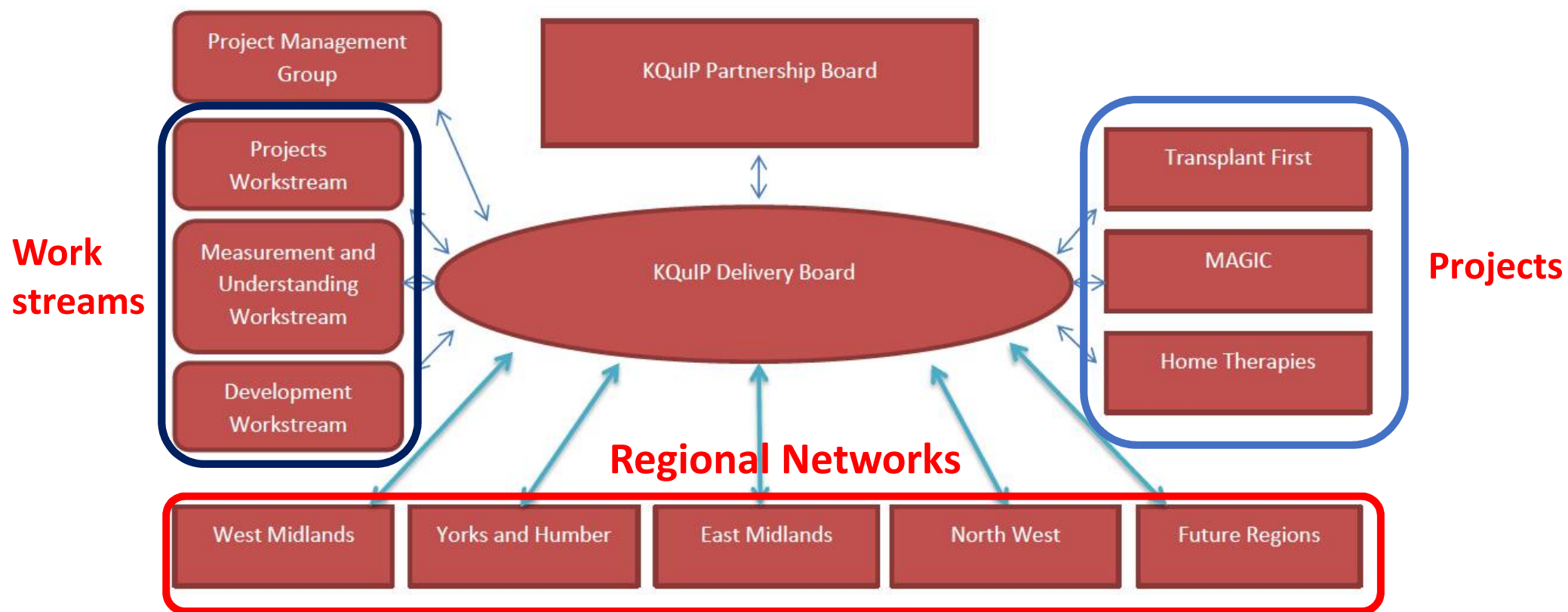
KQuIP Progress so far... Regional Days

KQuIP have supported 4 QI regional days so far.....

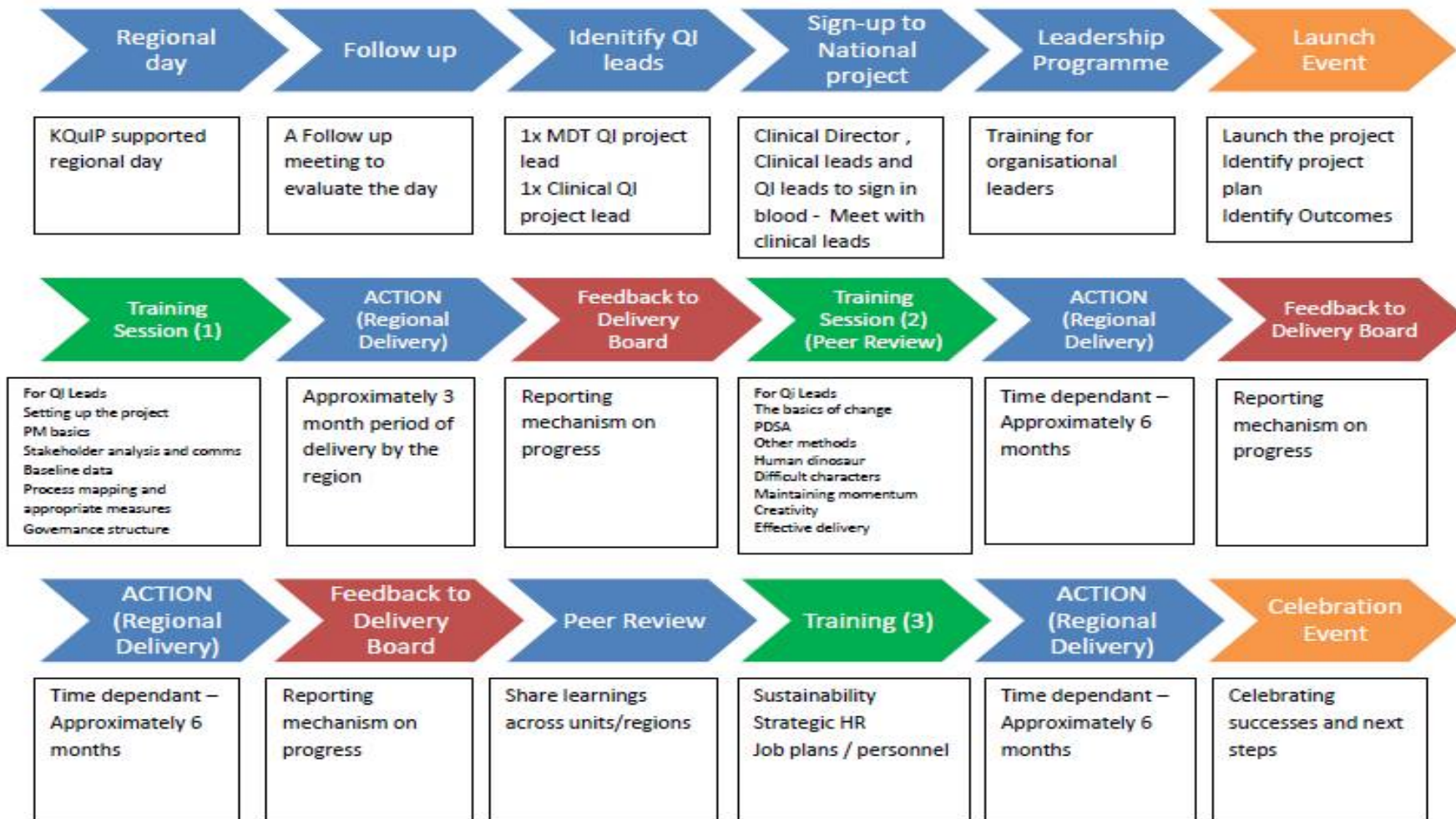
- West Midlands - Built QI infrastructure with identified QI leads. Set up an AKI network. Delivered a Peer Review Day. Identifying next steps.
- Yorkshire and the Humberside - Identifying infrastructure with QI leads. Identifying national project. Identifying next steps for delivery.
- East Midlands - Identifying infrastructure with QI leads. Identifying national project. Identifying next steps for delivery



KQuIP Delivery Structure –Regional Focus



KQuIP Regional Delivery Support Plan



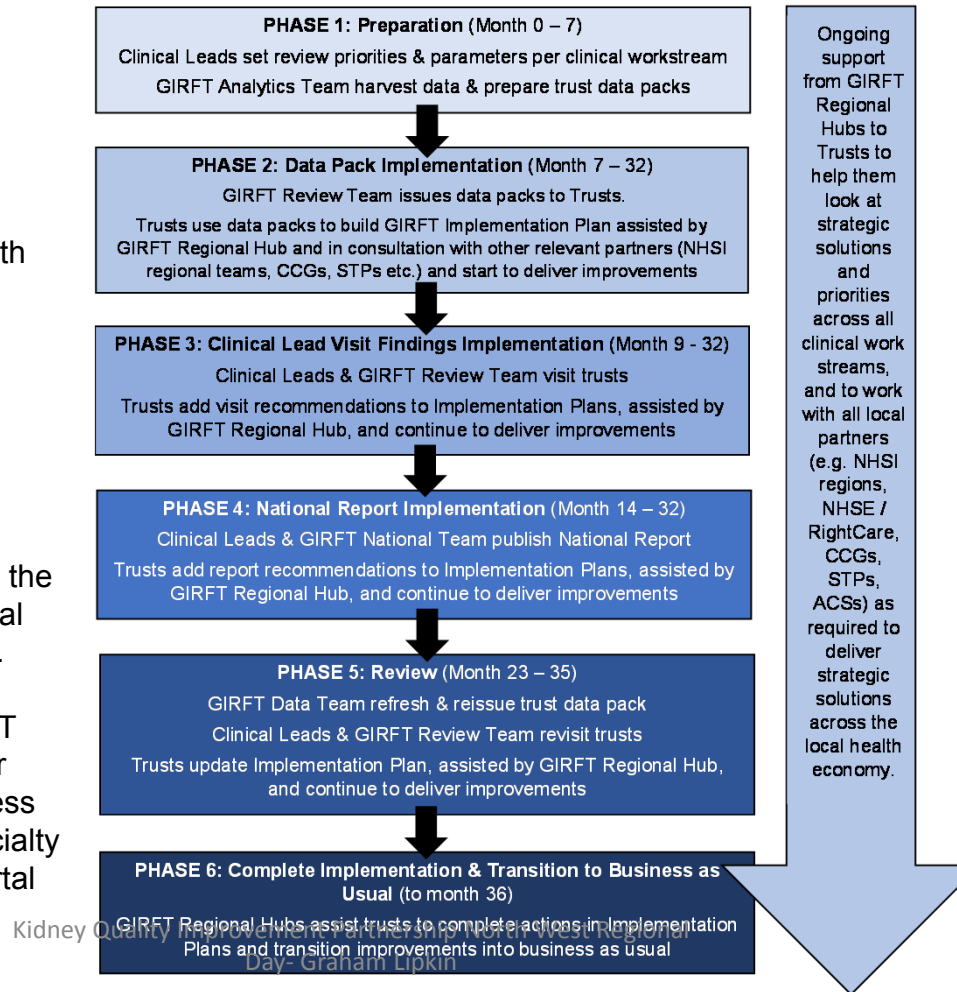
What happens in practice?

This diagram shows how different teams within the GIRFT programme work with trusts and other partners at different times to support implementation.

Clinical Leads set the direction, supported by the Review & Analytics teams.

GIRFT Regional Hubs are the main source of ongoing local support for implementation.

As well as accessing GIRFT metrics and findings in their data packs, trusts can access a range of metrics per specialty via the **Model Hospital** portal at <https://model.nhs.uk/>



GIRFT Regional Support

- 7 GIRFT Regional Hubs operating from Nov 2017.
- **implementation plans** reflecting:
 1. Variations highlighted in Trusts' data packs
 2. Improvement priorities from Clinical Lead visits
 3. Recommendations from each National Report
- GIRFT will also produce **good practice manuals** full of case studies and best practice guidance Hubs will also help to ensure that GIRFT findings and plans are cascaded widely within each trust.



Training in Leadership & QI Methods-Medical and MDT



“In order to practise medicine in the 21st century, a core understanding of quality improvement is as important as our understanding of anatomy, physiology and biochemistry”

Stephen Powis, Medical Director, Royal Free London NHS Foundation Trust, 2015



E-Learning and Faculty

**‘THINK
KIDNEYS’**

KQuIP
Kidney Quality
Improvement
Partnership

Kidney Quality Improvement Partnership Wmids Regional Day-
Graham Lipkin

•Outcomes of today:

1. Select Priority project (s)
2. Identify Quality Improvement Leads in each Renal Unit Medical & MPT
3. Sign up to KQuIP

KQuIP welcomes you...

...enabling you and your team to improve quality and safety



[Home](#) [About](#) [Case studies](#) [Latest](#) [Resources](#) [Events](#) [Forum](#)

Kidney Quality Improvement Partnership

Working together to develop, support and share improvement in kidney services to improve people's health and add value



UK Renal Registry 18th Annual Report

www.thinkkidneys.nhs.uk/kquip/

What is KQuIP?

KQuIP is a dynamic network of kidney health professionals, patients and carers who are committed to developing, supporting and sharing quality improvement in kidney services in order to enhance outcomes and quality of life for patients with kidney disease.

What does KQuIP do?

KQuIP will improve the lives of adults and children affected by kidney disease by supporting healthcare professionals, kidney units, renal networks and commissioners across the UK to achieve the highest quality of care for patients.

Enjoy the Day

31/01/2018

Kidney Quality Improvement Partnership North West Regional
Day- Graham Lipkin

**'THINK
KIDNEYS'**

KQuIP
Kidney Quality
Improvement
Partnership