

MAGIC

What does success look like?

Katie Fielding,
MAGIC Lead

Senior Clinical Educator – Haemodialysis, Derby
MDT Fellow, UK Renal Registry

Implementing MAGIC



What does success look like?



AV access used for all HD patients,
who it is suitable for
Achieve 80% + RA standards

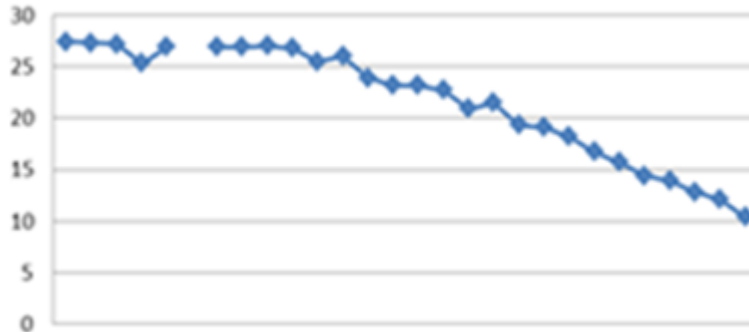
Complete MAGIC

The Scoring Table

0	1	2	3
<ul style="list-style-type: none"> 0-10% of the population have a score of 0 or 1, indicating a need for further education. 10-20% of the population have a score of 2, indicating a need for further education. 20-30% of the population have a score of 3, indicating a need for further education. 30-40% of the population have a score of 4, indicating a need for further education. 40-50% of the population have a score of 5, indicating a need for further education. 50-60% of the population have a score of 6, indicating a need for further education. 60-70% of the population have a score of 7, indicating a need for further education. 70-80% of the population have a score of 8, indicating a need for further education. 80-90% of the population have a score of 9, indicating a need for further education. 90-100% of the population have a score of 10, indicating a need for further education. 	<ul style="list-style-type: none"> 10-20% of the population have a score of 1 or 2, indicating a need for further education. 20-30% of the population have a score of 3, indicating a need for further education. 30-40% of the population have a score of 4, indicating a need for further education. 40-50% of the population have a score of 5, indicating a need for further education. 50-60% of the population have a score of 6, indicating a need for further education. 60-70% of the population have a score of 7, indicating a need for further education. 70-80% of the population have a score of 8, indicating a need for further education. 80-90% of the population have a score of 9, indicating a need for further education. 90-100% of the population have a score of 10, indicating a need for further education. 	<ul style="list-style-type: none"> 20-30% of the population have a score of 2 or 3, indicating a need for further education. 30-40% of the population have a score of 4, indicating a need for further education. 40-50% of the population have a score of 5, indicating a need for further education. 50-60% of the population have a score of 6, indicating a need for further education. 60-70% of the population have a score of 7, indicating a need for further education. 70-80% of the population have a score of 8, indicating a need for further education. 80-90% of the population have a score of 9, indicating a need for further education. 90-100% of the population have a score of 10, indicating a need for further education. 	<ul style="list-style-type: none"> 30-40% of the population have a score of 3 or 4, indicating a need for further education. 40-50% of the population have a score of 5, indicating a need for further education. 50-60% of the population have a score of 6, indicating a need for further education. 60-70% of the population have a score of 7, indicating a need for further education. 70-80% of the population have a score of 8, indicating a need for further education. 80-90% of the population have a score of 9, indicating a need for further education. 90-100% of the population have a score of 10, indicating a need for further education.

ELearning:-

- A&P
- AV access assessment
- Cannulation
- Access complications
- Quiz to assess learning & certificate



Love my Rope Ladder

STOP!
Don't area puncture
This is when your needles are placed in the same area over and over.

THINK!
Needles should be placed 0.5 - 1cm from the last cannulation site.

CHOOSE!
The needling sites must move up the fistula vein in a systematic manner.

Hospital Logo

MAGIC

Love my Rope Ladder

STOP!
Don't area puncture
This is when your needles are placed in the same area over and over.

THINK!
Needles should be placed 0.5 - 1cm from the last cannulation site.

CHOOSE!
The needling sites must move up the fistula vein in a systematic manner.

Hospital Logo

MAGIC



Optimise clinical outcomes related to cannulation

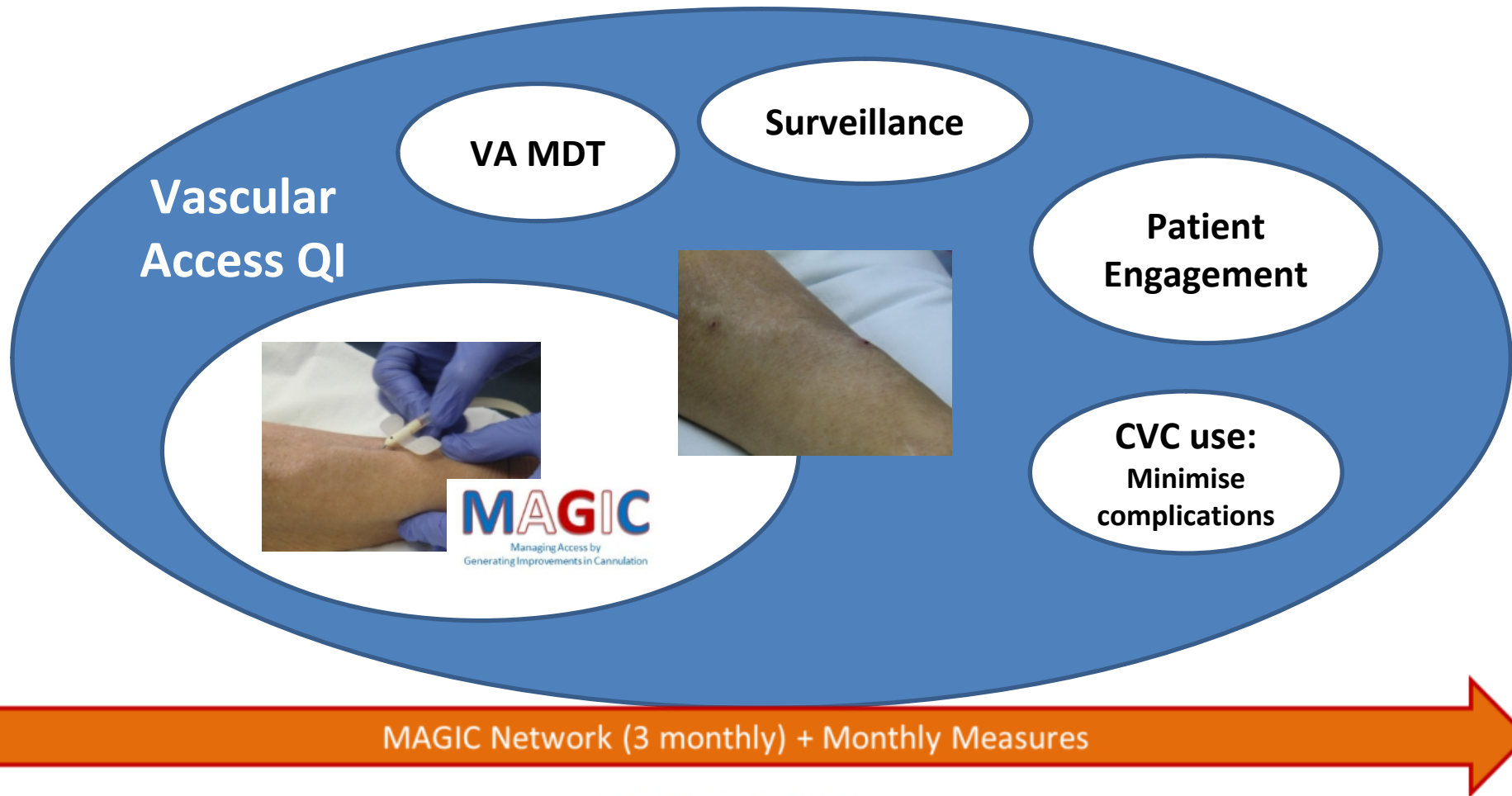
Minimise

- Area Puncture
- Missed Cannulation
- Infection
- AV access failure
- CVC use

Promote

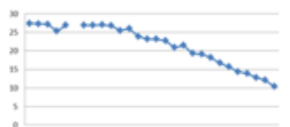
- Good cannulation technique
 - Accurate and gentle
 - Rope ladder & / or buttonhole
- Good patient experience
- Patients choose AV access
- Longevity of access
- AV access use

Your journey after MAGIC



What does success look like?

Complete MAGIC



ELearning:-

- A&P
- AV access assessment
- Cannulation
- Access complications
- Quiz to assess learning & certificate



Optimise clinical outcomes related to cannulation

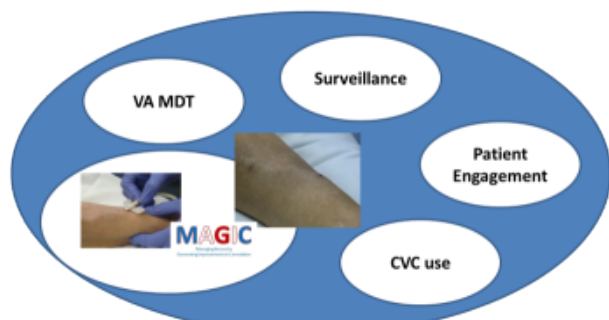
Minimise

- Area Puncture
- Missed Cannulation
- Infection
- AV access failure
- CVC use

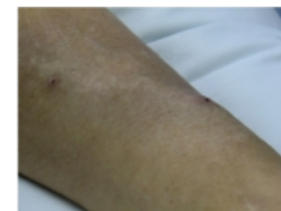
Promote

- Good cannulation technique
 - Accurate and gentle
 - Rope ladder & / or buttonhole
- Good patient experience
- Patients choose AV access
- Longevity of access
- AV access use

Your journey after MAGIC



MAGIC Network (3 monthly) + Monthly Measures



AV access used for all HD patients, who it is suitable for
Achieve 80% + RA standards