

Salford Royal Transplant First Team



Who we are



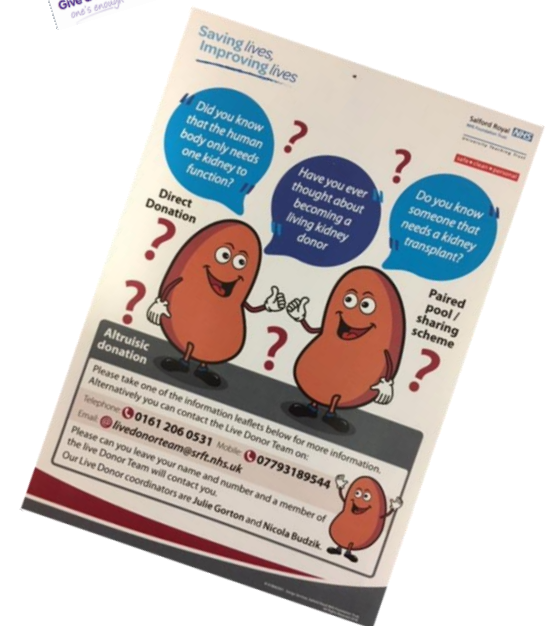
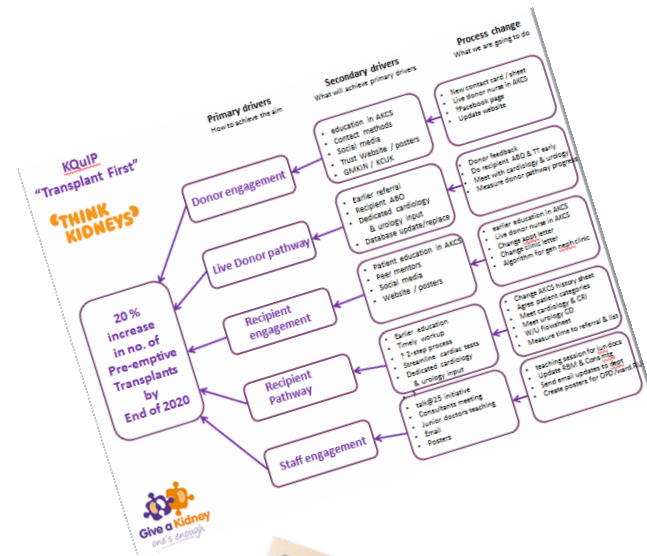
- 2 x live donor nurses
- 2 x CKD nurses
- Consultant
- 2 managers
- Patients

- “Pre-transplant” population of half of Greater Manchester
- 500 patients with eGFR <20

Where we are now

safe • clean • personal

- Completed process mapping of live donor and recipient pathways
- Driver diagram created
- PDSA cycles under way
 - Engagement
 - Recipient pathway
 - Donor pathway
- Now focusing on exact measures and ensuring reliable data collection



Challenges

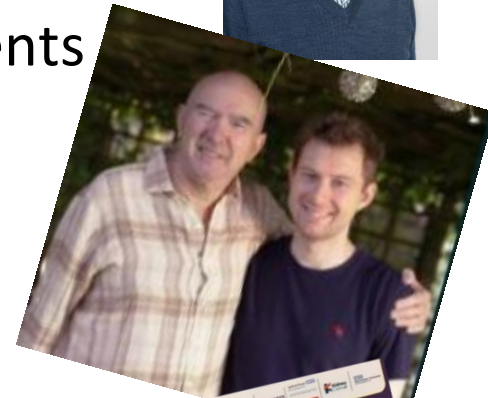


- Late referrals to Advanced Kidney Care clinic when eGFR already <15
- Delays for transplant workup clinic (6 weeks vs ideal 2 wks)
- Delays in cardiac stress tests
- Delays in reporting of radiology tests
- Renal website outdated
- High ethnic minority population with low living donation rate

What we are proud of...



- Patient involvement at meetings including patient from South Asian community
- Committed MDT approach to all meetings & events
- Use of GMKIN social media for engagement
- New live donor video and blog (father to son)
- Rochdale BME engagement event 12/3/19
- Media events to publicise living donation on World Kidney Day
 - Manchester Evening News and BBC Radio Manchester
- Weekly “One-stop” Transplant workup clinic now includes dobutamine stress echo – fewer visits & quicker workup



Future plans to share

safe • clean • personal

Campaign for earlier
discussion

①

Talk Transplant



- Is the eGFR 25 & worsening?
- **Start the conversation about living donor transplant.**



it takes
time to find
a donor

②

Proposal for future joint North West kidney donation awareness event

- Living donor stories
- Deceased donor family speakers
- Recipient stories
- Cultural and religious debates
- Education around Opt out law 2020