

WIRRAL AND CHESTER

TRANSPLANT FIRST APRIL 2019

WHO ARE WE?

Wirral regional cover includes Hub (Arrowe Park) and two satellite units (Chester and Clatterbridge).

Total number of CKD5 01/10/2018 – 31/12/2018: 324

Arrowe – 236

Chester- 88

Total number on dialysis: Total 230

Arrowe – 99

CGH - 42

Chester – 59

Home – PD 20; HHD 10

CHALLENGES?

- **CARDIOLOGY!!**
 - Constraints on service provision
 - Increased waiting times

- **COMMUNICATION**
 - Real time data difficult to achieve
 - Access problems with Cyberen

- **INCREASE PRE-EMPTIVE LISTING**

- **CURRENT STRUCTURE OF LOW CLEARANCE CLINICS:**
 - Need to streamline multidisciplinary clinics
 - Pathway to capture ALL suitable patients
 - Ensure documentation is completed

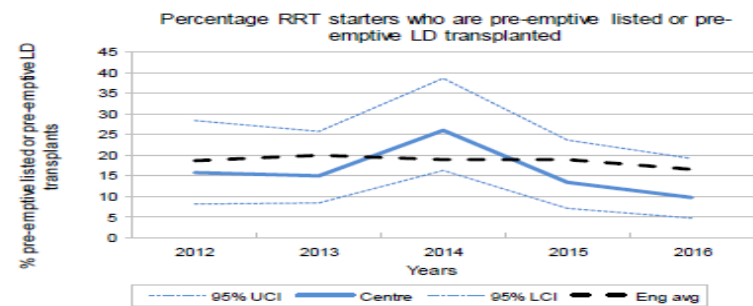
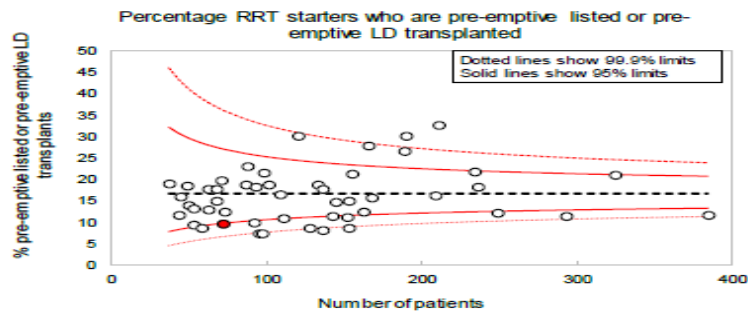
GIRFT REVIEW



6.2 Renal Transplant listing

Item	Metric	Source and year of current report	Provider	England	Position	Variation chart
6.2.1	Recorded decision on transplant listing - timely presentation patients at RRT start (%)	UKRR Dashboards 2017	94.9%	86.1%	21 of 51	
6.2.2	RRT starters who are pre-emptive listed or pre-emptive transplanted (living donor (LD)) * (%)	UKRR 2016	9.7%	16.6%	42 of 49	

*This metric is calculated as the % of incident RRT patients that had a first date of listing before start of RRT or that received a pre-emptive live donor transplant. Note that this metric is different from the measure published by NHSBT



6.3 Renal Transplantation

Item	Metric	Source and year of current report	Provider	England	Position	Variation chart
6.3.1	Incident transplants which are pre-emptive transplants (LD or DD) (%)	UKRR 2014 to 2016	12.1%	20.4%	44 of 50	
6.3.2	Transplanted by 2 years (%)	UKRR 2012 to 2014	24.4%	20.8%	15 of 52	
						Score (%) 0 - 10 10 - 25 25 - 75 75 - 90 90 - 100
Living donor co-ordinators						
6.3.3	Number of LD coordinators per million population	Questionnaire 2018	0.0	1.2	45 of 45	

WHAT ARE WE PROUD OF?

Increased transplant rates over the past 3 years (2017 = 14, 2018 = 25, 2019 = 9 to date)

LD identified – compared nationally

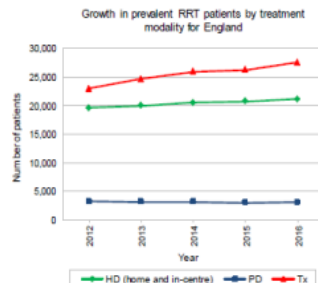
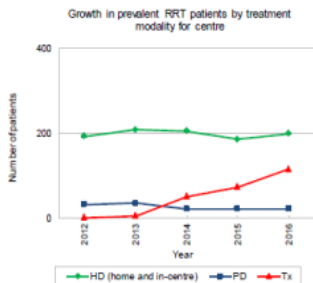
Improved system of one stop nurse led clinic for all transplant referrals.

Good team working across sites.



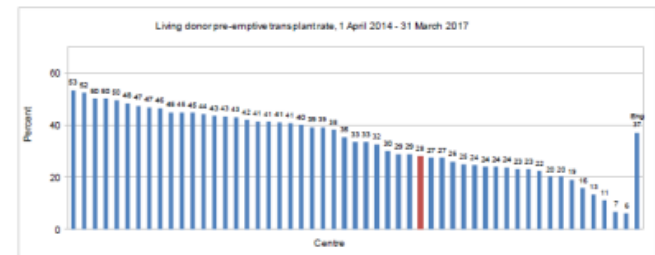
4.2 Renal Replacement Therapy – continued

Item	Metric	Source and year of current report	Chart
4.2.3	Growth in RRT prevalence by treatment modality	UKRR 2012-16	See plot below



8.1 Renal Transplant Rates - continued

Item	Metric	Source and year of current report	Provider	England	Position	Variation chart
8.1.7	Pre-emptive transplant - living donor (%)	NHSBT April 14 - March 17	28.0%	37.0%	33 of 52	



8.2 Renal Transplant Outpatient Activity

Item	Metric	Source and year of current report	Provider	England	Position	Score (%)
8.2.1	Examination for post-transplantation of Kidney of live donor, LA14Z, as reported in reference obst	Reference Cost 2016/17		134		6 - 10 10 - 25 25 - 75 75 - 90 90 - 100 No data for centre
8.2.2	Recipient, 19 years and over, LA13A, as reported in reference obst	Reference Cost 2016/17		2,705		No data for centre

WHERE WE WERE, WHERE WE ARE NOW AND WHERE WE WANT TO BE....

