

# KQuIP North East & Hull MAGIC Launch

## 28 January 2020

KQuIP is a dynamic network of kidney health professionals, patients and carers who are committed to developing, supporting and sharing quality improvement in kidney services in order to enhance outcomes and quality of life for patients with kidney disease.

It helps kidney services embed quality improvement into daily practice, whilst understanding and reducing unwarranted variation in care. Events like these focus on spreading and sharing good practice.

The North East & Hull KQuIP project is MAGIC led by the Regional Lead, Katy Jones. Units participating include

- Newcastle
- Middlesbrough
- Carlisle
- Sunderland
- Hull

### Purpose of the day

- Stakeholders from across the region came together to launch MAGIC
- To share and learn about vascular access cannulation and complicated fistula's
- To see where they are, what they want to improve and what they hope to achieve from the project
- Continue baselining data and measurement for Quality Improvement.

The day began with an introduction from Ranjit Klare KQuIP Programme Manager, Katy Jones, Regional Lead and Ron Cullen, CEO Renal Association introducing KQuIP and providing an update on the renal national picture.



Next Jennifer Adam, Consultant Nephrologist (North Cumbria Integrated Care Trust) presented on "What is MAGIC" detailing definitions, population, measurement metrics, interventions and timelines.

[Click here to view the presentation](#)

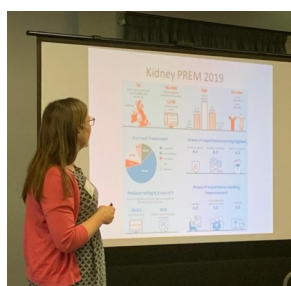


Katy Jones, Consultant Nephrologist - Newcastle Upon Tyne presented on the Kidney Patient Reported Experience Measures (PREM) highlighting data from the annual national survey of kidney patients.

This helped renal unit teams understand how patients feel about their experience of care and showed where improvement can be made.

[Click here to view the presentation](#)

[Click here to view PREM data](#)



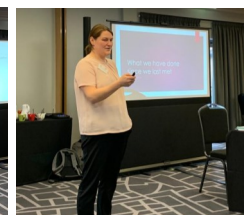
Patient experience was represented by Linda Pickering (Kidney Care UK) and Vicky Harrison (Kidney Patient Association) who spoke candidly of their experience of being a kidney patient and carer.

Nicole Williams, Consultant Nephrologist (Hull) facilitated the next session - where units shared their complicated fistula presentations. The aim of this was to review difficult to needle access and suggest ways to improve needling.

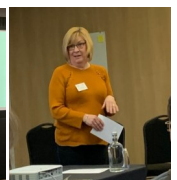
[Click here to view the presentation](#)



QI Leads also presented on "What have we done since we last met" which raised further discussion around data collection, auditing of perceived needling techniques, assessment tools, renal nurse teaching, and setting up mini access teams.



[Carlisle presentation](#)  
[Freeman presentation](#)  
[Hull presentation](#)  
[Middlesbrough presentation](#)





Finally, a World Café session was held focussing on three topics: **Expert Nursing Group, MAGIC and Patient Experience** whereby QI leads and patients facilitated discussion with the 49 attendees of the event. Key points were fed back from each facilitator detailing areas for further consideration.

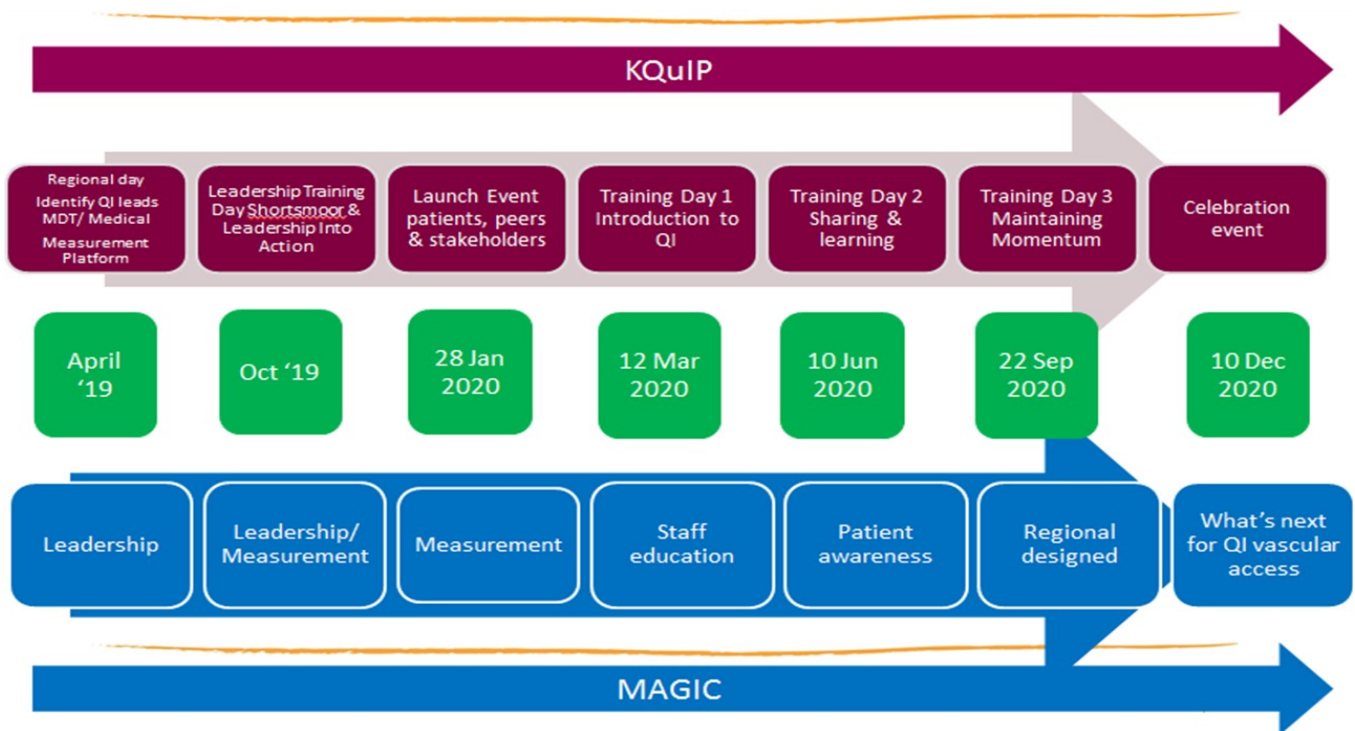


### Feedback

"It was a great event! I really enjoyed it and was lovely to meet everyone in our field from our region and exciting to see we all want to help and support one another in providing even better care for our patients". (Nurse)



### Seven steps in the North East KQuIP MAGIC Programme



Contact the KQuIP team for more information:

[Ranjit.Klare@renalregistry.nhs.uk](mailto:Ranjit.Klare@renalregistry.nhs.uk)

[Leeanne.Lockley@renalregistry.nhs.uk](mailto:Leeanne.Lockley@renalregistry.nhs.uk)